



GOLIAD GROVE



BUILDER CLOSEOUT!



713-868-7226

5023 Washington Avenue
Houston, Texas 77007



GoliadGrove.com

Features



First floor living with large private back yard

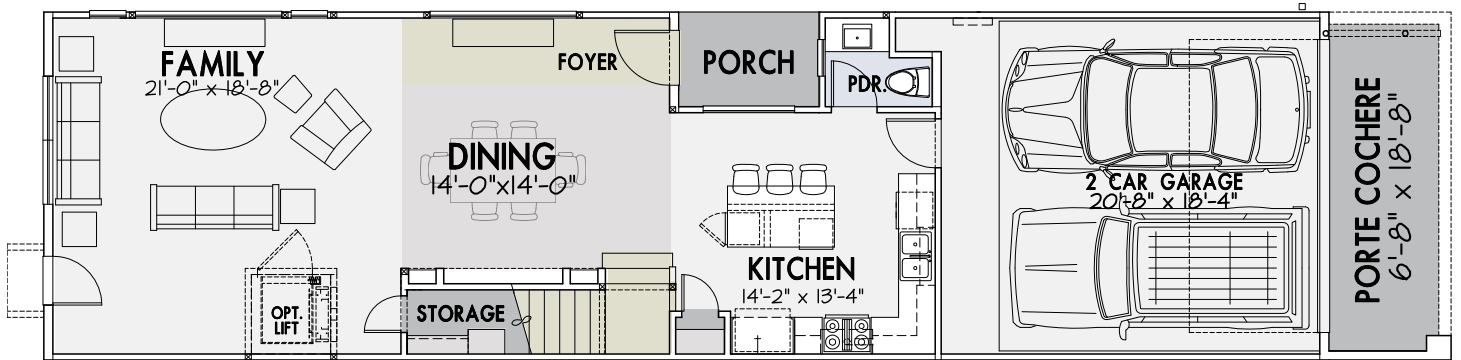
Free-standing home with private driveway

Third floor bonus rooms perfect
for entertaining

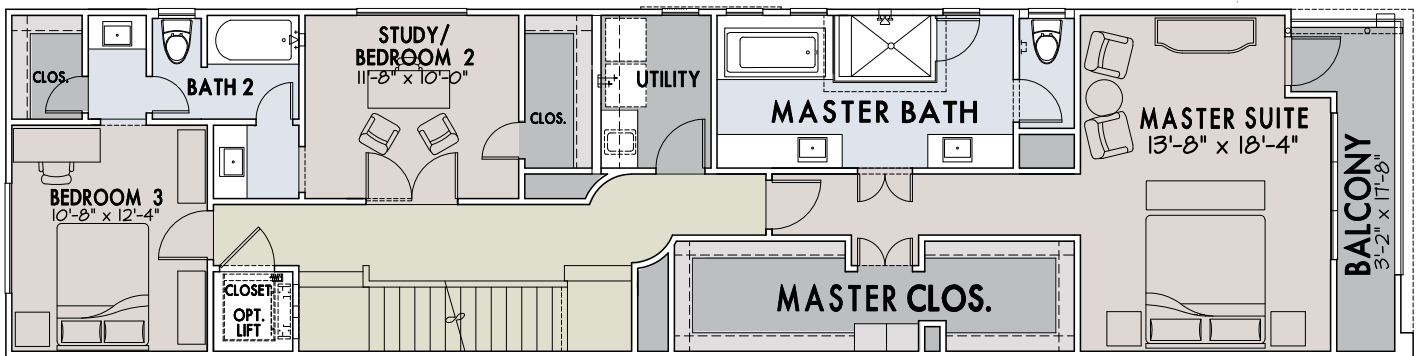
Elevator ready home with
second floor balcony

Floorplan

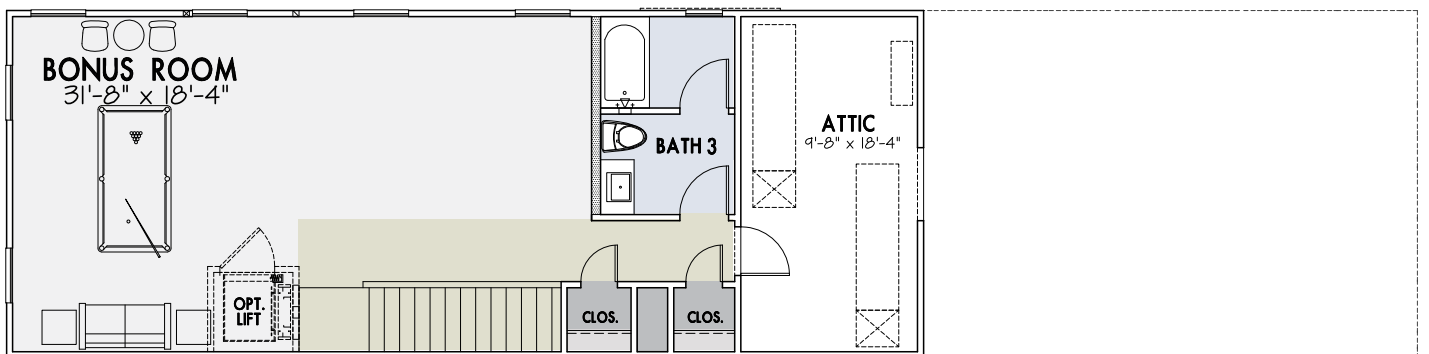
3002
1215 & 1211



First Floor



Second Floor



Third Floor

Available Homes



1211 Crockett- MODEL
\$499,990

3 Beds	3/1 Baths	3002 Sq. Ft.
-----------	--------------	-----------------

SAWYER HEIGHTS

Sawyer Heights is on the edge of Downtown and 12 minutes from the Galleria. This newly revived neighborhood is booming and improving every day. It is located between Houston's new "Restaurant Row" (Washington Avenue) and I-10. It is close to Downtown, Midtown and the Heights.



CitySide Homes prides itself on designing and building high quality, energy efficient homes in Houston's inner-city that includes Montrose, Heights, Rice Military, Shady Acres, EaDo and the Medical Center. Families, young professionals, and even empty nesters love CitySide's flexible, open design floor plans that are as livable as they are beautiful and architecturally unique.



713-868-7226

5023 Washington Avenue
www.UrbanLiving.com



An Equal Housing Lender.
NMLS: 70345