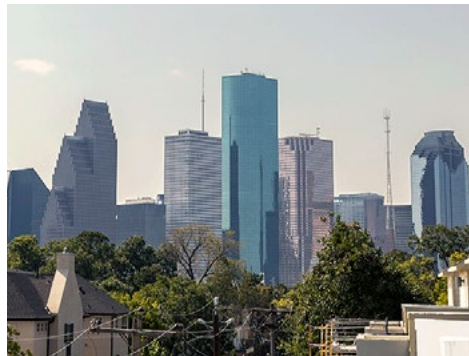




GOLIAD

LANDING



713-868-7226

5023 Washington Avenue
Houston, Texas 77007



GoliadLanding.com

Features



Beautiful free-standing contemporary homes

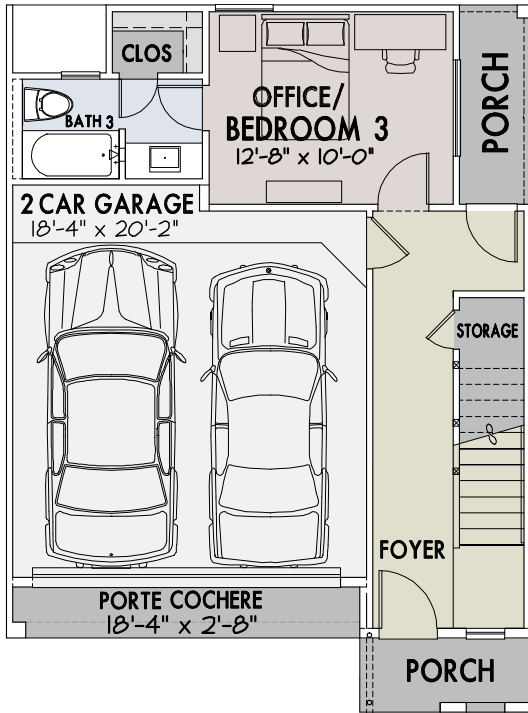
Roof terrace with great Downtown views

Private driveways allow for guest parking

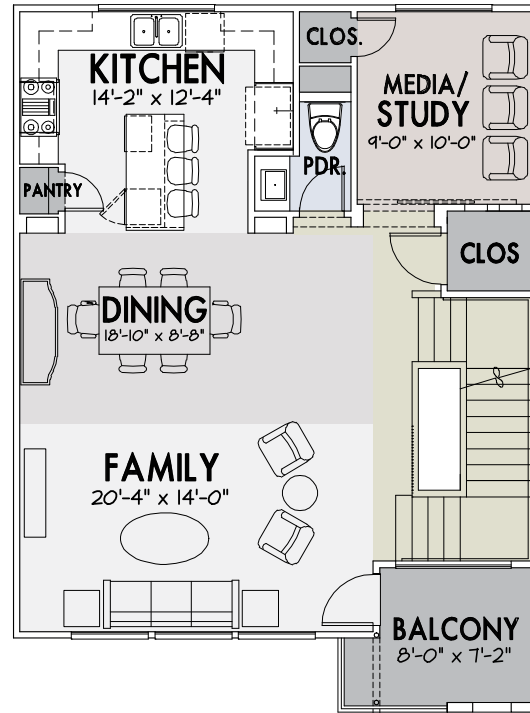
Open feel living concept on second floor

Floorplan

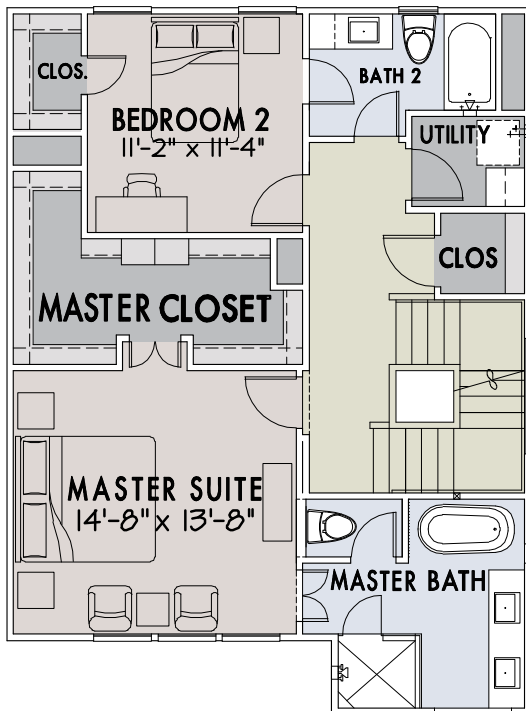
2234



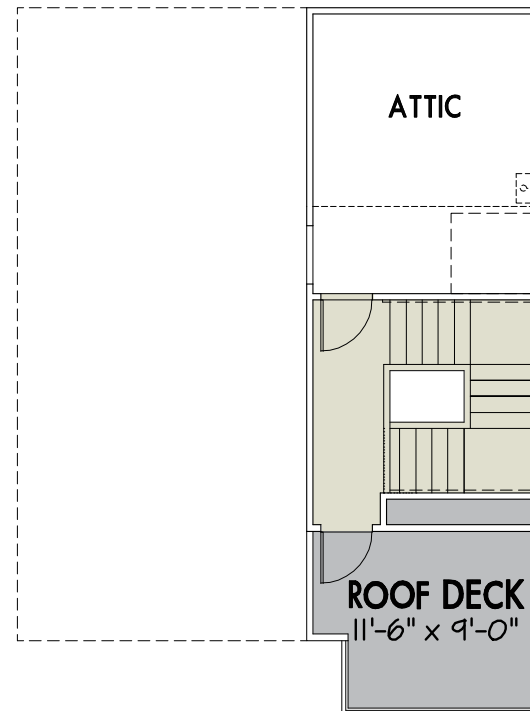
First Floor



Second Floor

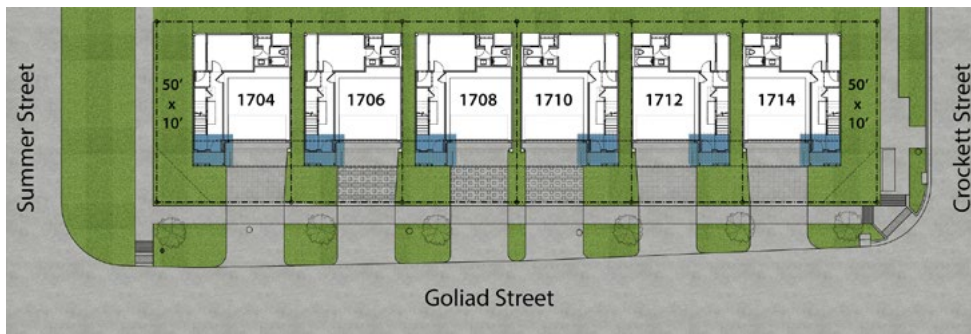


Third Floor



Roof Deck

Available Homes

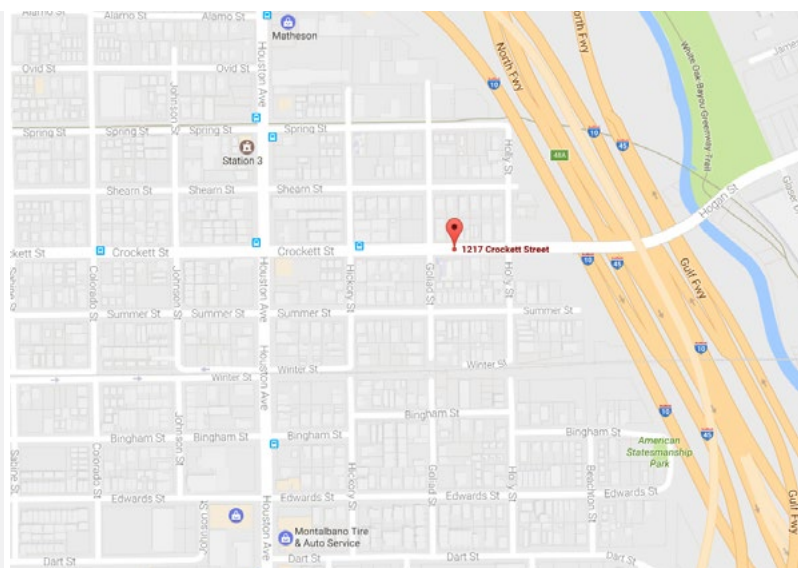


CitySide Homes prides itself on designing and building high quality, energy efficient homes in Houston's inner-city that includes Montrose, Heights, Rice Military, Shady Acres, EaDo and the Medical Center. Families, young professionals, and even empty nesters love CitySide's flexible, open design floor plans that are as livable as they are beautiful and architecturally unique.

| | | |
|---|---|---|
| 1704 Goliad \$459,990 3 Beds + Study 3/1 Baths 2234 Sq. Ft. | 1706 Goliad \$449,990 3 Beds + Study 3/1 Baths 2234 Sq. Ft. | 1708 Goliad \$449,990 3 Beds + Study 3/1 Baths 2234 Sq. Ft. |
| 1710 Goliad \$449,990 3 Beds + Study 3/1 Baths 2234 Sq. Ft. | 1712 Goliad \$449,990 3 Beds + Study 3/1 Baths 2234 Sq. Ft. | 1714 Goliad \$459,990 3 Beds + Study 3/1 Baths 2234 Sq. Ft. |

SAWYER HEIGHTS

Sawyer Heights is on the edge of Downtown and 12 minutes from the Galleria. This newly revived neighborhood is booming and improving every day. It is located between Houston's new "Restaurant Row" (Washington Avenue) and I-10. It is close to Downtown, Midtown and the Heights.



713-868-7226
 5023 Washington Avenue
www.UrbanLiving.com

